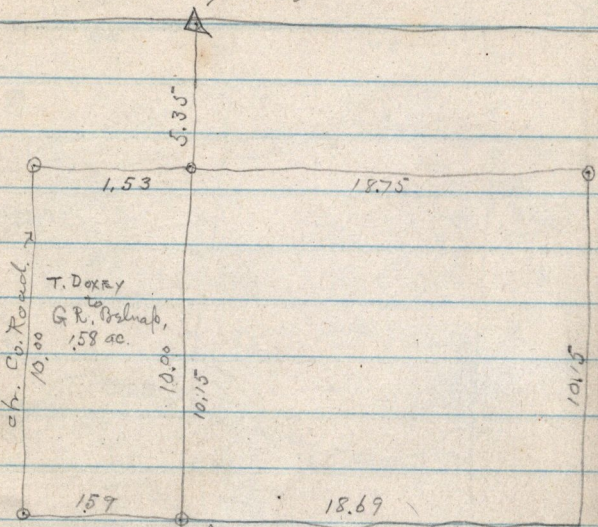


N.W. Cor. Sec. 16 T. 5. N. R. 2. W



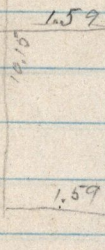
T. DORRY
to
G.R. Osborn,
1.58 ac.

N. E. 1/4 Sec 13
T. 5 N. R. 3 W.

N. W. 1/4 Sec 18
T. 5 N. R. 2 W.

S. line Doley
Patent & N. line
Jas. Johnston Pat,

By measure this dit = 19.15
But Johnston Conveyance
reduce it to 9.36



street